

Leander Road, London, SW2

1 bedroom flat to let

£403 Per Week

Furnished

Property Details

Keating Estates are proud to present this truly lovely flat perfectly laid out and instantly liveable from the moment you walk through the door. One of the key selling points of this Victorian conversion is the fantastic open-plan kitchen and living area, a generous space with ample room for both relaxing and dining. Natural light pours in through the skylights and rear windows, which offer charming views across the rooftops. The split-level design further enhances the spacious, airy feel of the property.

The bathroom, like the rest of the flat, is in excellent condition, ideal for anyone looking to move into a home completely hassle-free. The bedroom is a comfortable double, quietly tucked away at the rear of the property for maximum privacy and tranquillity.

The location is superb: around a twelve minute walk from Brixton South London's vibrant culinary hotspot with an eclectic nightlife and just five minutes from Brockwell Park, regarded by many locals as one of London's finest green spaces. In short, this is a beautiful home in a sought-after street, close enough to the buzz to enjoy it, yet far enough away to retain a calm and peaceful feel.

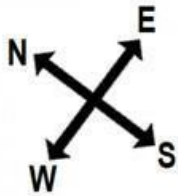
Features

- Victorian
- One bedroom
- Close to transport links
- Light and airy
- Open plan reception and kitchen
- Close to Brockwell park

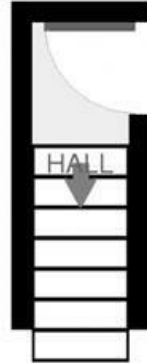
Council tax band C EPC rating D (57)



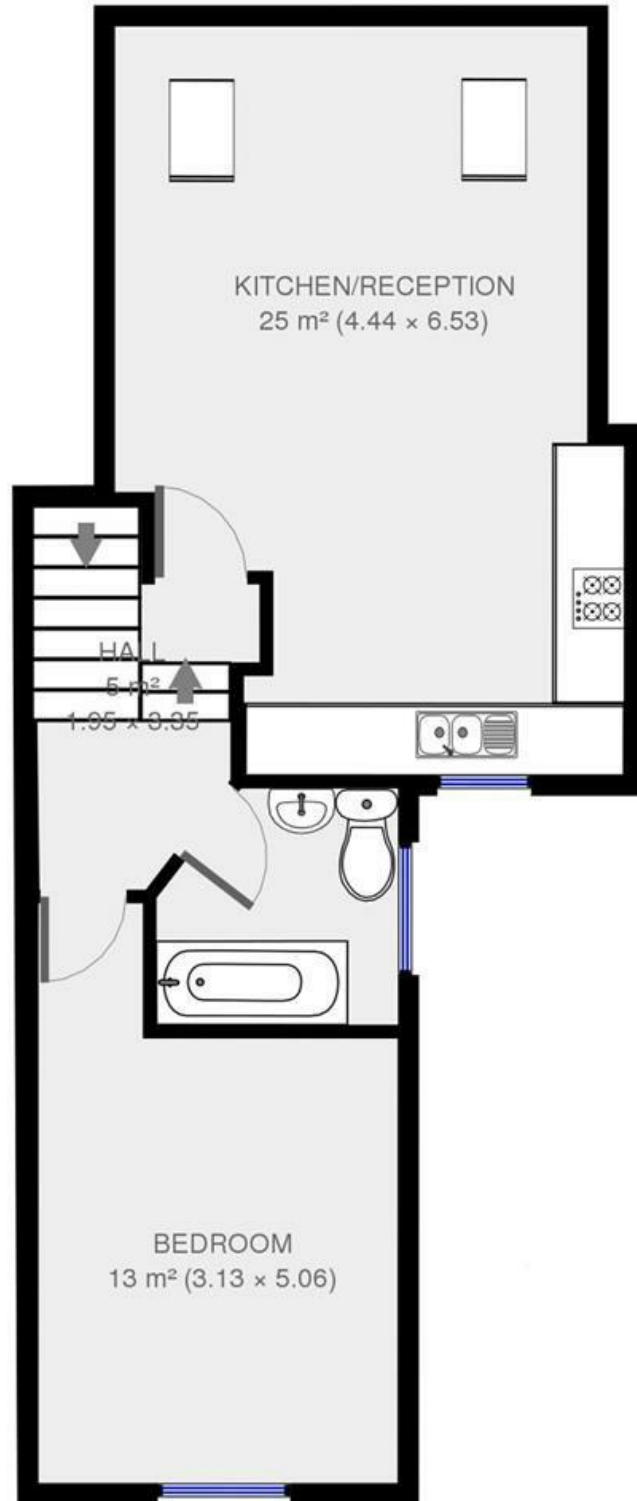
Leander Road, London, SW2



First Floor



Second Floor



1 bed flat.

Approx internal area:

549 sqft 51 sqm

While we do try our very best, floor plans are produced as a guide only and we take no responsibility for the precise accuracy with which any property is represented

Leander Road

Leander Road, London, SW2

